



World Farmers

769 Main St Box 112, Lancaster MA 01523
www.worldfarmers.org · (978) 706-7935

PEST ALERT FOR LEAFHOPPER

Adult leaf hoppers are mostly wedge-shaped and slender, and range from 1/10 to ½ inch long. Most leaf hoppers are either brown or green; they can jump rapidly into flight when disturbed. The nymphs are similar to the adults, but paler in color and wingless. They can't fly, but they do hop rapidly when disturbed.

Leaf hoppers attack beans, egg plant, potatoes, squash family plants, Gongura.

Damage: Both adults and nymphs suck juices from stems and underside of leaves, giving leaves a light, mottled appearance., toxic saliva distorts and stunts plants and causes tip burn and yellowed, curled leaves- "hopper burn".

Organic Control:

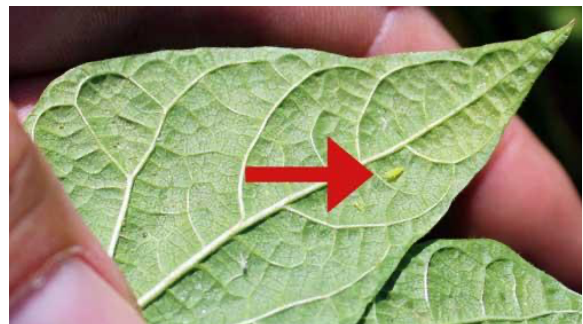
1. Control nymphs when they are still small by spraying them with insecticidal soap or by washing them from plants with strong sprays of water.
2. Cover plants with floating row covers.
3. Grow pollen and nectar producing plants like goldenrod and yarrow to attract beneficials, such as lady beetles.

Threshold

In green beans, thresholds are 0.5 per sweep or 2/ft of row at the seedling stage, and 1/sweep or 5/ft of row from 3rd trifoliate leaf to bud stage. Use a threshold of 1.5 leafhopper per leaf in eggplant.



Hopper burn in beans



Leaf Hopper on underside of leaf



World Farmers

769 Main St Box 112, Lancaster MA 01523
www.worldfarmers.org · (978) 706-7935

HOPPER BURN IN BEANS