



This presentation is part of an educational modular program designed to provide new and beginning farmers and ranchers with relevant information to initiate, improve and run their agricultural operations



United States Department of Agriculture  
National Institute of Food and Agriculture

**This program is funded by the  
Beginning Farmer and Rancher  
Development Program (BFRDP)**

**USDA-NIFA-BFRDP 2010-03143**

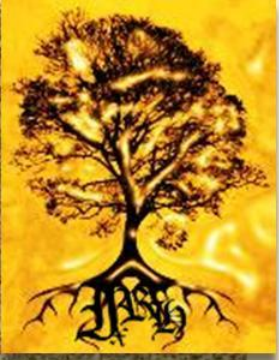


# AGROFORESTRY



This project is partly sponsored by USDA-NIFA-  
BFRDP 2010-03143.

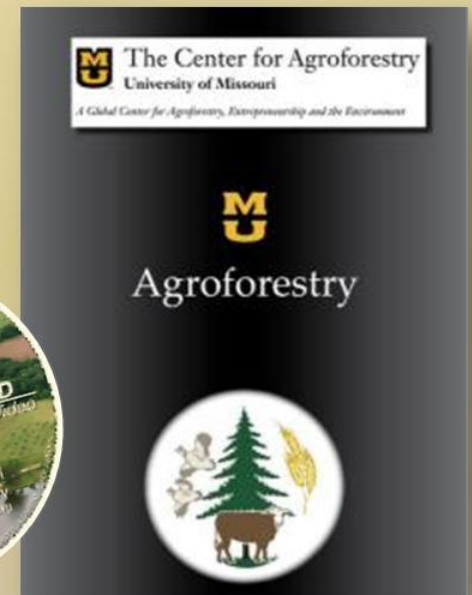




We want to thank the Center for Agroforestry at the University of Missouri for their permission to use their materials to prepare this presentation

# Training manual for Applied Agroforestry Practices

- University of Missouri
  - The Center for Agroforestry (UMCA)
  - 2006 Edition



# What is Agroforestry?

Agroforestry is an intensively managed farming system that uses productive trees and or shrubs together with crops, livestock or both using an integrated approach







Some of the most common types of agroforestry are:

**Alley cropping**



**Silvopasture**



**Riparian buffers**



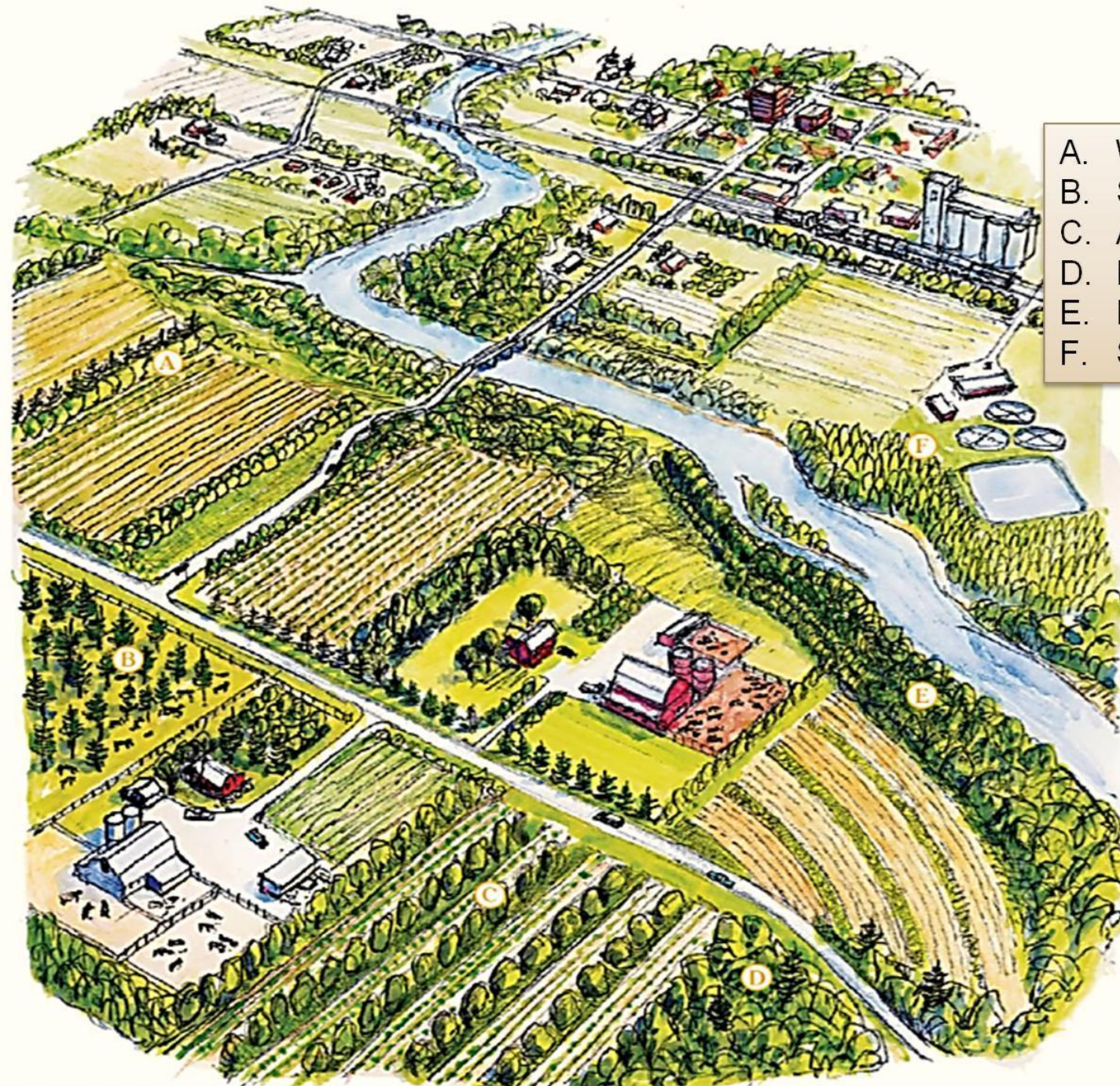
**Forest farming**



**Windbreaks and  
shelterbelts**



- A. Windbreaks
- B. Silvopasture
- C. Alley cropping
- D. Forest farming
- E. Riparian forest buffers
- F. Special applications





# Riparian buffers



Before and after  
adequate agroforestry  
management



# Riparian Buffers

Planned combinations of trees, shrubs, grasses, forbs and bioengineered structures close or within, a stream designed to mitigate the impact of land use on the stream





# Riparian Buffers

- Protect water quality
- Stabilize stream banks and prevent erosion
- Increase wildlife habitat
- Improve aquatic habitat
- Increase the income potential and diversity of the farm

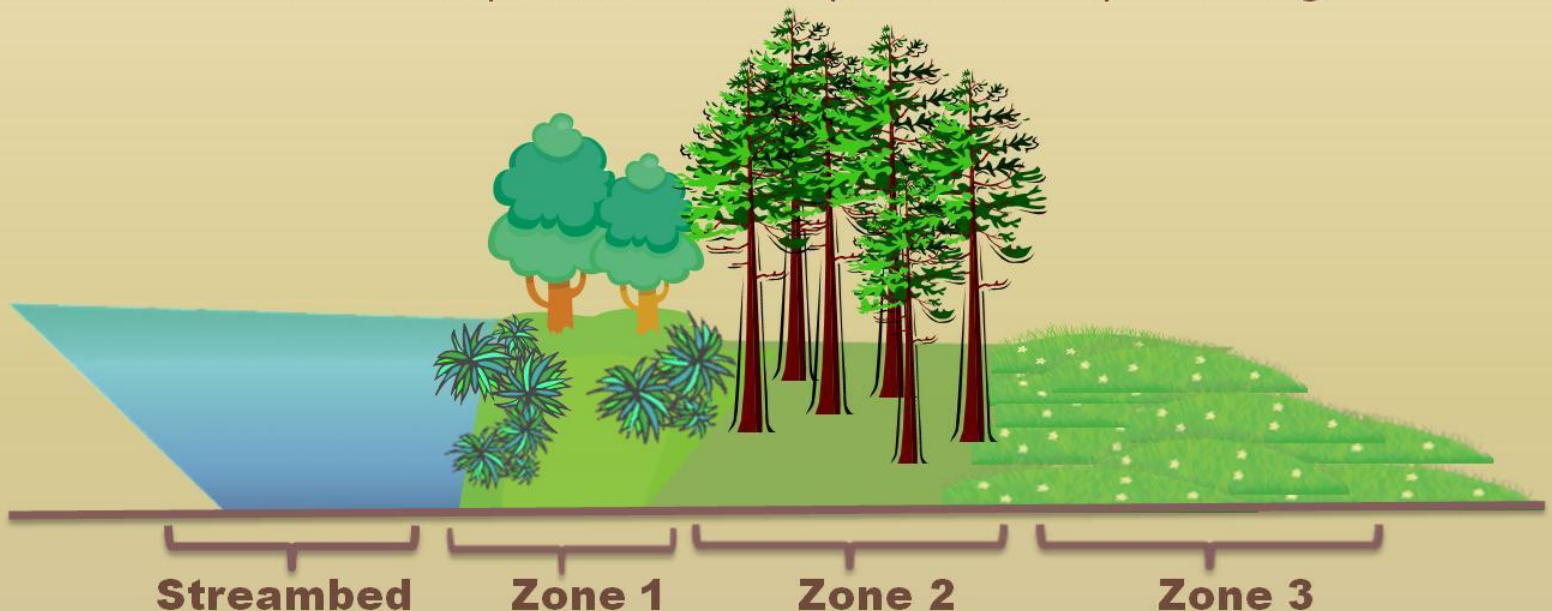






## Riparian buffers are usually designed to contain three zones:

- **Zone 1** – Undisturbed forest: trees and vegetation to stabilize the stream bank; trees shade the stream and keep water cool
- **Zone 2** – Managed forest: trees can be harvested. Organic soils will remove nitrogen. Traps soil particles and other nutrients
- **Zone 3** – Grass: increases water storage and filtration. Grass next to the crop zone and composed of deep rooted grasses





# Riparian Buffers

- Zone 1

- Those plants used in zone 1 need to be able to withstand flooding
- Plants that are fast growing and spread readily are beneficial





# Riparian Buffers

## • Zone 2

- Plants here need to be able to handle occasional flooding
- Trees and shrubs grown here can be used to produce income
  - Fruit trees
  - Berry bushes
  - Nut trees

Mixing trees shrubs and forbs  
will increase wildlife habitat





# Riparian Buffers

- Zone 3

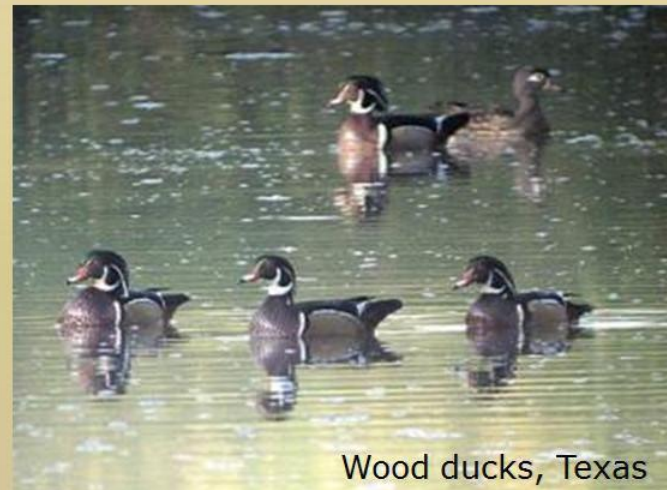
- The main function is to slow ground runoff allowing it to enter the root zone where nutrients can be absorbed
- Grasses with stiff stems will help to slow water
- The width of this zone can be adjusted to accommodate the amount of runoff
  - Wide for large amounts
  - Narrow in small





# Riparian Buffers

- Leasing out the right to hunt can be a good source of income
  - Need to plant and manage the buffer for increased wildlife
- Other sources of income include
  - Nuts
  - Berries
  - Timber
  - Biomass



Wood ducks, Texas



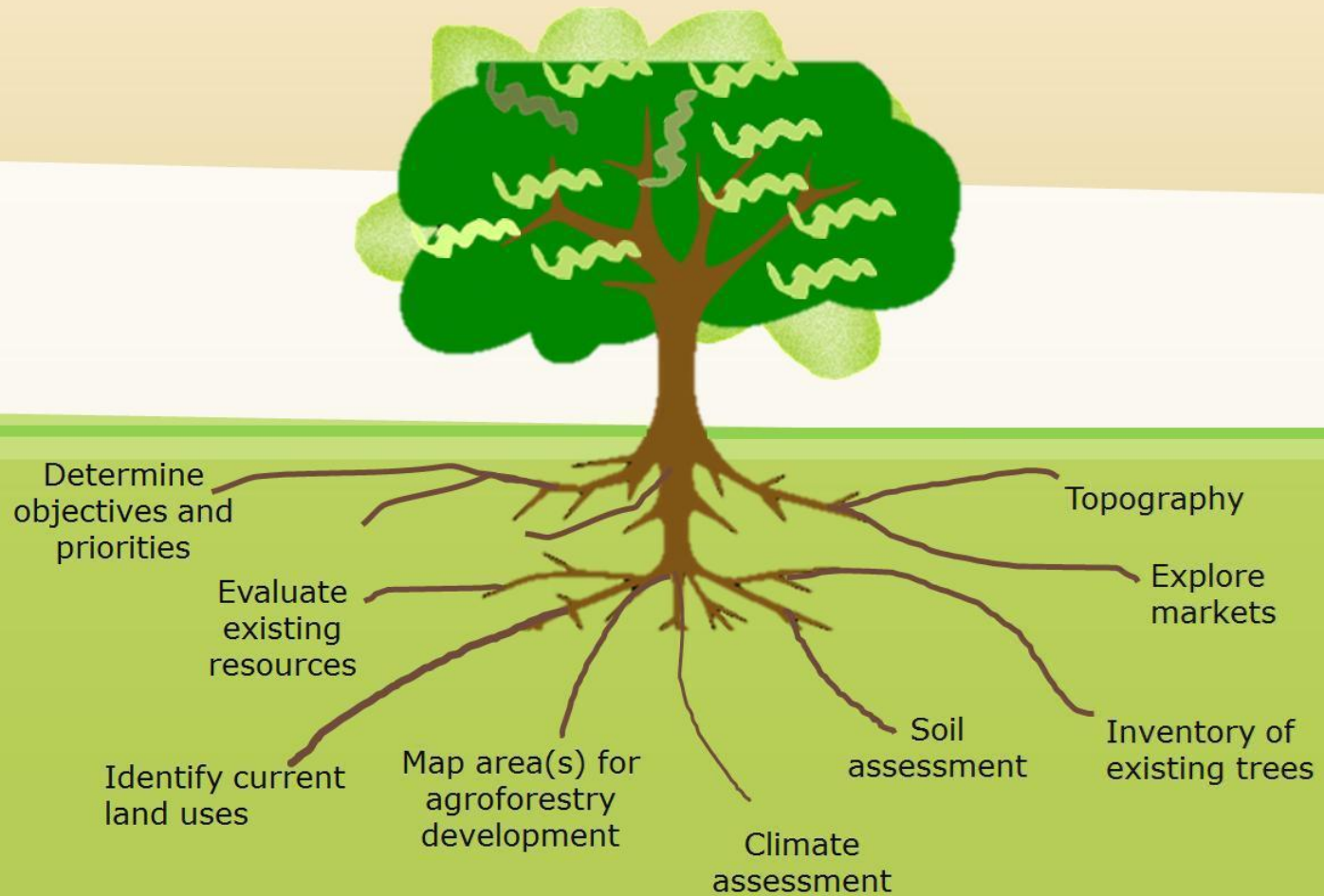
# Riparian Buffers Summary

- When effectively implemented riparian buffers control erosion and help prevent farm inputs from entering waterways
- They increase wildlife habitat
- Provide alternate sources of income

Goats are the ideal alternative for clearing along your river, creek, pond, etc. No herbicides or machinery required. Plus your goats will have plenty of food and water



# Selecting an agroforestry strategy





# Planning

- Before starting an agroforestry project it is important to have a plan
- When starting don't try and do more than you can
  - Start small don't try and do everything at once



# Planning

- **Trees are a long term project so plan accordingly**

- What are your long term goals?
  - Some crops will be ready within a year, 5 years or 20 years
- What are your resources?
- What type of agroforestry will work best for you?
- Will you be able to market your products?



<http://mollysbox.wordpress.com/2011/04/05/3105/>



# Planning

- Are there areas on your farm that would benefit more from trees than others?
- Is short or long term income more important?
- How much management are you willing to put into it?
- Are there tax benefits?
- Is there help in startup costs?



# Planning

- Know your resources
- Use a map, soil assessments and climate assessment to determine the type of plants will grow on your farm
- Then use plant guides to determine which plants to grow based on your goals





# Designing the Layout

- In designing the layout of the farm several issues need to be considered:
  - Number of trees species
  - Plant trees in single or multiple rows
  - Alley width
  - Distance between trees in a row



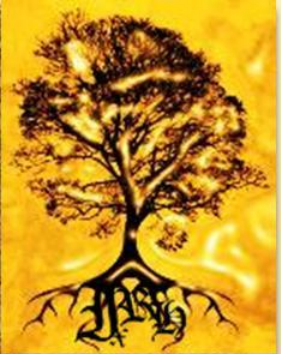


- Planting more than one species of trees allows for:
  - Greater diversity of income
    - For example, planting fruiting trees with fruit producing shrubs lengthens the time that you have fruit for market
  - Greater biodiversity
  - Better habitat for wildlife



- However you must consider that planting more species:
  - Requires more management
  - Competition for light and nutrients between trees (root competition)
  - Also some trees produce compounds that inhibit the growth of others (allelopathy)





<http://www.sciencedirect.com/science/article/pii/S0016706104000266>



<http://www1.montpellier.inra.fr/safe/english/PAC/introduction.php>

This presentation was prepared by



USDA-ARS-DBSFRC, Booneville, AR  
David Burner, Research Agronomist  
Annie Donoghue



University of Arkansas, Fayetteville, AR  
Dan Donoghue  
Ixchel Reyes Herrera

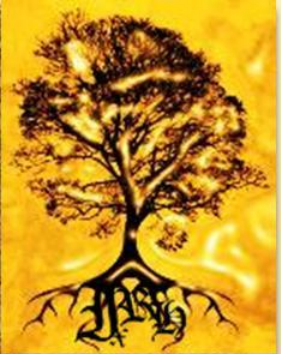
**This program is funded by the  
Beginning Farmer and Rancher Development  
Program (USDA-NIFA-BFRDP)**

**USDA-NIFA-BFRDP 2010-03143**



United States Department of Agriculture  
National Institute of Food and Agriculture





This presentation is part of an educational modular program designed to provide new and beginning farmers and ranchers with relevant information to initiate, improve and run their agricultural operations

This project is the result of the collaboration of these institutions:



**USDA-NIFA-BFRDP 2010-03143**



# Want more information?

- Visit the Center for Agroforestry
  - University of Missouri

<http://www.centerforagroforestry.org/>



**THE CENTER FOR AGROFORESTRY**  
UNIVERSITY OF MISSOURI  
*A Global Center for Agroforestry, Entrepreneurship and the Environment*  
School of Natural Resources  
College of Agriculture, Food and Natural Resources

**Agroforestry  
Silvopasture**

**NEW & NOW**

**New UMCA Media Release:**  
The Online Master's Program  
in Agroforestry

**3rd Annual Agroforestry  
Symposium is**  
January 11, 2012

**CSA News: Agroforestry, A  
Growing Science seeks to  
boost its practice**

**New Agroforestry in Action  
guide: Black Truffle  
Cultivation**

**New! Information about  
online graduate program**

**In the News: UMCA director  
discusses agroforestry**

The Center for Agroforestry at the University of Missouri, established in 1998, is one of the world's leading centers contributing to the science underlying agroforestry, the science and practice of intensive land-use management combining trees and/or shrubs with crops and/or livestock.

Agroforestry practices help landowners to diversify products, markets and farm income; improve soil and water quality; sequester carbon, and reduce erosion, non-point source pollution and damage due to flooding; and mitigate climate change.

The five integrated practices of agroforestry - forest farming, alley cropping, silvopasture, forest farming and windbreaks - enhance land and aquatic habitats for fish and wildlife and improve biodiversity while sustaining land resources for generations to come.

**Message from the Director**

Greetings from The Center for Agroforestry at the University of Missouri! As many of you know, the Center has...

[Read full message >>](#)

**Navigation Menu:**

- Home
- Events
- About the Center
- About Agroforestry
- Agroforestry in Missouri
- Publications
  - Newsletters
  - Outreach
  - Research
  - Conference Proceedings
- News
- Faculty/Staff
- Research
- Education
  - Online Graduate Program
  - Graduate Students
- Outreach
- Frequently Asked Questions
- Profit in Agroforestry



# Want more information?

USDA-National Agroforestry Center	<a href="http://www.unl.edu/nac">http://www.unl.edu/nac</a>
USDA-Natural Resources Conservation Service	<a href="http://www.nrcs.usda.gov/">http://www.nrcs.usda.gov/</a>
US-Forest Service	<a href="http://www.fs.fed.us/">http://www.fs.fed.us/</a>
ATTRA	<a href="https://attra.ncat.org/attra-pub/summaries/summary.php?pub=62">https://attra.ncat.org/attra-pub/summaries/summary.php?pub=62</a>
Agricultural Marketing Resource Center (Ag MRC)	<a href="http://www.agmrc.org/commodities_products/forestry/">http://www.agmrc.org/commodities_products/forestry/</a>